

# CE .NET Quick Configuration Guide

(LXE CE .NET Mobile Devices Only)



Copyright © May 2005 by LXE Inc.  
All Rights Reserved  
E-SW-CNCONFIG-A

---

## Notices

*QuickConfig* is software developed by LXE. The software is installed in computer equipment. Any reference, whether direct or implied, to any LXE RF and wireless equipment requires the reader to refer to the specific equipment's User Guides for cautions, warnings and federal notices (e.g. FCC, EMC, UL, CE, etc.).

### **Copyright Notice:**

This manual is copyrighted. All rights are reserved. This document may not, in whole or in part, be copied, photocopied, reproduced, translated or reduced to any electronic medium or machine-readable form without prior consent, in writing, from LXE Inc.

Copyright © 2005 by LXE Inc., An EMS Technologies Company, 125 Technology Parkway, Norcross, GA 30092 U.S.A. (770) 447-4224

LXE® is a registered trademark of LXE Inc. All other brand or product names are trademarks or registered trademarks of their respective companies or organizations. When this manual is in PDF format: "Acrobat ® Reader Copyright © 1987-2005 Adobe Systems Incorporated. All rights reserved. Adobe, the Adobe logo, Acrobat, and the Acrobat logo are trademarks of Adobe Systems Incorporated." Applies.

### **Notice:**

LXE Inc. reserves the right to make improvements or changes to the information in this manual at any time without notice. While reasonable efforts have been made in the preparation of this manual to assure its accuracy, LXE assumes no liability resulting from any errors or omissions in this manual, or from the use of the information contained herein. Further, LXE Incorporated, reserves the right to revise this manual and to make changes to it from time to time without any obligation to notify any person or organization of such revision or changes.

*First Release May 2005*

## Table of Contents

<b>CHAPTER 1 INTRODUCTION</b>	<b>1</b>
<b>Overview</b>	<b>1</b>
<b>Identify Your Equipment</b>	<b>2</b>
MX3X CE .NET / MX3-RFID	2
MX5 CE .NET	2
MX6 Mobile Companion	2
VX6 CE .NET	2
VX7 CE .NET	3
<b>Prerequisites</b>	<b>3</b>
<b>Microsoft Registry Files – CE .NET Devices vs Desktop Devices</b>	<b>3</b>
<b>Install the QuickConfig Software on a Desktop/Laptop</b>	<b>4</b>
<b>Editable Parameters</b>	<b>5</b>
IP Address Options	5
DHCP	5
Radio	5
Profile	5
Client Name	5
RFTerm	6
Session	6
Secondary ID (ANSI) / LU Number (IBM)	6
AutoLogin	7
Reply 1	7
Reply 2	7
Reply 3	7
Reply 4	7
Reply 5 (ANSI Only)	7
Reply 6 (ANSI Only)	7
<b>How To . . .</b>	<b>8</b>
Setup	8
Get the Parameters	8
Send the Parameters	8
Repeat	8
<b>LXE QuickConfig Screens</b>	<b>9</b>
Initial Display	9
Options	9
Connect Button	10
Options	10
Get Button	11
Options	11
Send Button	12
Options	12

Save Button.....	13
Options .....	13
Load Button .....	14
Options .....	14
<b>CHAPTER 2 ACTIVE SYNC / GET CONNECTED</b>	<b>15</b>
<b>Introduction .....</b>	<b>15</b>
<b>Equipment-Specific ActiveSync Parameters.....</b>	<b>15</b>
<b>Equipment-Specific ActiveSync Cables.....</b>	<b>16</b>
<b>ActiveSync / Initial Install.....</b>	<b>17</b>
Install ActiveSync on Desktop/Laptop.....	17
Serial Connection .....	17
MX3X.....	17
MX5 CE .NET.....	18
MX6 .....	18
VX6 and VX7.....	18
USB Connection .....	19
MX3X / MX3-RFID.....	19
MX5 CE .NET.....	19
MX6 .....	19
VX6 and VX7.....	19
<b>ActiveSync Connect .....</b>	<b>20</b>
MX3X / MX3-RFID .....	20
MX5 CE .NET .....	20
MX6.....	21
VX6 and VX7 .....	21
<b>CHAPTER 3 PARAMETERS COLLECTED BY QUICKCONFIG</b>	<b>23</b>
<b>Introduction .....</b>	<b>23</b>
MX3X, MX3-RFID, MX5 CE .NET, VX6, VX7 .....	23
Control Panel.....	23
MX3-RFID Only .....	23
MX5 CE .NET Only .....	23
VX6/7 Only .....	24
MX6.....	24
RFTerm.....	24

---

**Illustrations**

Figure 1 Display – Install LXE QuickConfig -- Result .....9  
Figure 2 Display – Connect Result .....10  
Figure 3 Display – Get Result.....11  
Figure 4 Display – Send Result .....12  
Figure 5 Display – Save Result.....13  
Figure 6 Display – Load Result .....14



# Chapter 1 Introduction

## Overview

The LXE QuickConfig software is a tool that speeds up the process of configuring multiple Windows CE .NET mobile devices with the same parameters. The software can be used at any time – at initial installation or when specific configuration parameters change.

QuickConfig resides on a desktop/laptop computer (PC).

See the section titled “Identify Your Equipment” to determine if your mobile devices can be configured using this software.

The software only allows device-specific data transfer. For example, the software will not allow registry parameters from an MX6 to be transferred to a VX6.

The main functions of the QuickConfig software are to:

- Collect a Configuration Parameter Listing from a “master” mobile device that is connected to the PC with a functioning ActiveSync connection.
- Send the Configuration Parameters to another mobile device of the same type, that is connected to the PC with a functioning ActiveSync connection.

*Note: Before the Configuration Parameter Listing is extracted from the “master” mobile device, the mobile device should be configured with the parameter settings to be used when setting up the remaining mobile devices.*

### **Important:**

**Application and operating system versions on multiple mobile devices must be identical. Changes are made to Registry files for the mobile device *ONLY*. The registry files on the PC are unaffected.**

**This software is designed specifically to run on desktop/laptop devices with a Windows operating system. Alternative operating systems are not supported.**

## Identify Your Equipment

Devices in the following tables can be configured using the CE .NET Quick Configuration Utility. If your equipment is not on this list, it cannot be configured using the Quick Configuration Utility.

---

### MX3X CE .NET / MX3-RFID



OS:	Microsoft Windows CE .NET 4.2
Radio:	Cisco 350 radio
Platform ID:	MX3X; WinCE v4.20
Power:	Battery Pack / AC/DC Adapter / Cradle

---

### MX5 CE .NET



OS:	Microsoft Windows CE .NET 4.2
Radio:	Cisco 350 radio
Platform ID:	MX5X; WinCE v4.20
Power:	Battery Pack / AC/DC Adapter / Cradle

LXE offers several MX5 devices. At the front bottom of the MX5 is a label indicating the operating system resident on the mobile device. This document is directed toward the MX5 with *Windows CE .NET* on the label.

---

### MX6 Mobile Companion



OS:	Microsoft Windows Mobile 2003
Radio:	SyChip
Platform ID:	MX6; WinCE v4.20
Power:	Battery Pack / AC/DC Adapter / Cradle

---

### VX6 CE .NET



OS:	Microsoft Windows CE .NET 4.2
Radio:	Cisco 350 radio
Platform ID:	VX6/7; WinCE v4.20
Power:	AC/DC Adapter



---

## VX7 CE .NET



OS:	Microsoft Windows CE .NET 4.2
Radio:	Cisco 350 radio
Platform ID:	VX6/7; WinCE v4.20
Power:	AC/DC Adapter

## Prerequisites

You will need:

- An LXE CE .NET device that has been configured with “master” parameters. See “Identify Your Equipment”.
- ActiveSync cable for the mobile device. See “Equipment Specific ActiveSync Cables”.
- Powered Cradle and/or AC/DC Adapter (optional, recommended)

A PC with:

- A COM or USB port available to connect to the mobile devices’ ActiveSync cable.
- A monitor with a minimum screen resolution of 800 x 600 pixels.
- Microsoft .NET Framework Ver 1.1 resident on the PC.
- Microsoft ActiveSync Ver 3.7 or higher installed and running on the PC.

*Note: LXE devices with Windows CE 3.0 operating systems (e.g. MX3-CE device) are not supported by LXE QuickConfig.*

## Microsoft Registry Files – CE .NET Devices vs Desktop Devices

The QuickConfig application creates/saves files as CE .NET device registry files. The device-specific registry files created have a different structure from the registry files created by traditional desktop/laptop applications with a Windows operating system.

It is very important that when the “Load File” command is used, that the .REG file chosen had been created previously by QuickConfig. .REG files not created by QuickConfig will be rejected.

Parameters are saved in CE .NET formatted registry files on the desktop/laptop with a (.reg) extension.

## Install the QuickConfig Software on a Desktop/Laptop

If your device is using Windows 2000 or Windows XP, the following steps must be taken to ensure LXE QuickConfig can be installed and run from your desktop or laptop:

- Log on as the Administrator
- The .NET Framework V 1.1 is installed on the desktop/laptop. This application can be acquired from the Microsoft website. The .NET framework is a requirement.

Doubleclick the QuickConfigInstall.msi file to run the LXE QuickConfig Setup Wizard. Click the Next button to continue or the Cancel button to exit the Wizard application.

Upon clicking the Next button, follow the instructions on the screen to install the LXE QuickConfig application to your PC. You can install the files in a different folder (than the default folder) during the installation wizard process.

You can determine whether this application can be used by just yourself (as the Administrator of the Windows 2000 or Windows XP computer) or by anyone who uses your computer. The default is “Just You”.

Click the Next button to continue the installation. Upon successful completion of the installation, click the Close button to exit the Installation Wizard program. If the program did not load successfully, you can either:

- Remove LXE QuickConfig using Add/Remove Programs in the Control Panel or
- Run LXE QuickConfig wizard to Repair the application.

During the installation process, the LXE QuickConfig icon is placed on your PC’s desktop and a link is placed in Start | Programs. You can start the LXE QuickConfig application using either option.

The first screen displayed waits for you to select either Connect, Load or Exit.

### Connect

Before clicking the Connect button for the first time, see “Chapter 2 – ActiveSync / Get Connected”.

### Load

Load a pre-existing .REG file into QuickConfig.

### Exit

The LXE QuickConfig program closes and you are returned to the PC Desktop.

---

## Editable Parameters

After parameters have been retrieved from the “master” mobile device, the following parameters can be edited/changed as appropriate for the mobile device that is to be programmed next.

---

### IP Address Options

Default value: Populated by the Get command.

Valid values: String. Format must follow x.x.x.x format where  $0 \leq x \leq 255$ .

---

### DHCP

Using DHCP as an IP Address option for subsequent mobile devices allows DHCP server generated IP Addresses for each mobile device type.

If the Master mobile device is set to use DHCP rather than a static IP address, the text field is disabled and “DHCP” is displayed.

---

### Radio

---

#### Profile

There can be multiple profiles. The profiles are populated by the Get command. Available profiles are shown in a drop down box. Only one profile can be selected at a time. As a different profile is selected, the Client Name is updated.

New radio profiles cannot be created using the LXE QuickConfig tool.

---

#### Client Name

Default value: Populated by the Get command.

Valid values: Character string up to a maximum of 16 characters

Use this option to assign consecutive Client Names for subsequent mobile devices.

## RFTerm

RFTerm group consists of the ID and AutoLogin parameters populated by the Get command.

---

## Session

The RFTerm Session parameters come in 4 sets, one for each “session” that is configurable on the mobile device. Selecting a session from the drop down menu displays the appropriate settings for that session.

It is possible for different sessions to be either ANSI or IBM. For an ANSI session the Secondary ID field label remains unchanged. For an IBM session, the label changes to “LU Number”.

---

## Secondary ID (ANSI) / LU Number (IBM)

Default value:	Populated by the Get command.
ANSI Valid values:	4 hexadecimal digits.
IBM Valid values:	32 alphanumeric characters.

---

## AutoLogin

---

### Reply 1

Default value: Populated by the Get command.  
Valid values: Character string up to a maximum of 50 characters.

---

### Reply 2

Default value: Populated by the Get command.  
Valid values: Character string up to a maximum of 50 characters.

---

### Reply 3

Default value: Populated by the Get command.  
Valid values: Character string up to a maximum of 50 characters.

---

### Reply 4

Default value: Populated by the Get command.  
Valid values: Character string up to a maximum of 50 characters.

---

### Reply 5 (ANSI Only)

Default value: Populated by the Get command.  
Valid values: Character string up to a maximum of 50 characters.

---

### Reply 6 (ANSI Only)

Default value: Populated by the Get command.  
Valid values: Character string up to a maximum of 50 characters.

---

## How To . . .

---

### Setup

1. Install the desktop .NET Framework (Version 1.1 or higher) and ActiveSync as necessary.
2. Install LXE QuickConfig on the PC.
3. (Optional but recommended) Connect the mobile device to an uninterruptible power source e.g. AC/DC power or powered cradle. Do not attach ActiveSync cables in this step.
4. Set up the mobile device that is to be the “master” for the remainder of the same type of devices e.g. MX3X.
5. Temporarily turn off Suspend mode on the mobile device.
6. Connect ActiveSync cables to the “master” mobile device and the PC.
7. Run ActiveSync on the PC and the mobile device and establish a Guest partnership (no data synchronization).
8. Run QuickConfig on the PC.
9. When the PC and mobile device are communicating using ActiveSync, click the Connect button on the QuickConfig main page.

---

### Get the Parameters

10. Click the Get button on the QuickConfig window.
11. The Status Message field shows registry keys being downloaded. Upon completion the Per Terminal Custom Parameters are populated with data from the mobile device.
12. Click the Save button to save the collected data to a “master” file on the PC.
13. When changes need to be made to the custom parameters before populating subsequent mobile devices, make parameter changes to the contents on the Main Screen. You may optionally save the changed file to the PC (using a different filename than the “master” saved file) prior to the next step.
14. Do not close ActiveSync. Click the Disconnect button on the QuickConfig application.

---

### Send the Parameters

15. Exchange the “master mobile device” with the next mobile device mechanically (exchanging AC/DC power, cradle, ActiveSync cables etc.).  
*Note: Disconnect cables from the mobile device before disconnecting cables from the PC.*
16. Initiate ActiveSync communication with the next mobile device.
17. Click the Connect button on the QuickConfig application.
18. If starting without a loaded parameter set, click the Load button and open the saved parameter file. If QuickConfig is still running after you used the “Get” button from the master device, this step is not necessary.
19. Click the Send button to send the parameters to the next mobile device.
20. After the Send process is completed, disconnect the mobile device from the cradle / cables. Warm boot the mobile device to make sure the changes are permanently saved and activated.

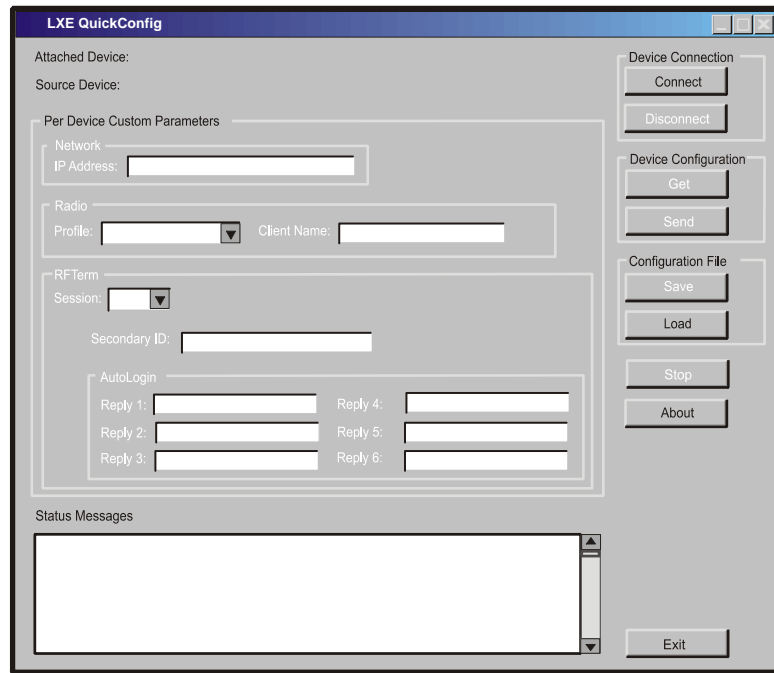
---

### Repeat

21. Repeat steps 14 through 20 until all mobile devices are programmed to your satisfaction.

## LXE QuickConfig Screens

### Initial Display

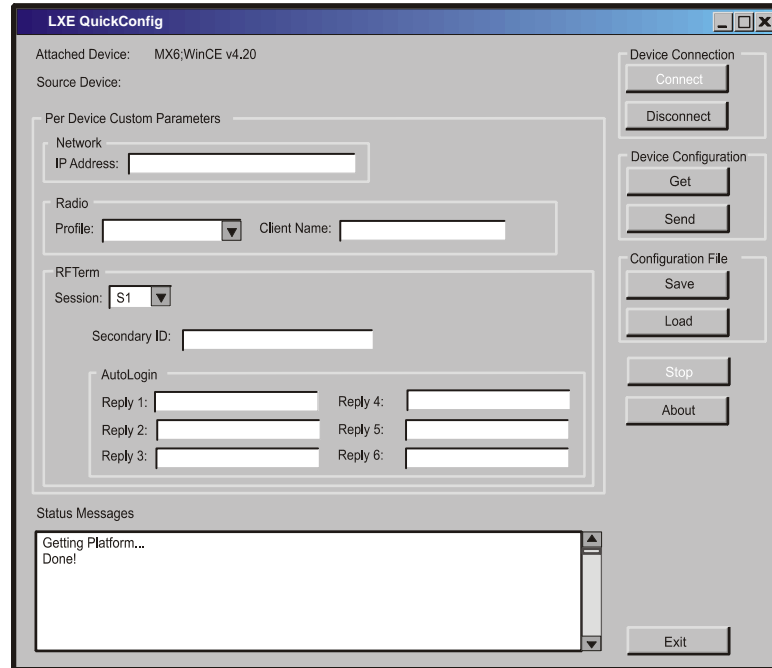


**Figure 1 Display – Install LXE QuickConfig -- Result**

### Options

Button	Description
Connect	Click to connect the PC to the mobile device. After connection, this button inactivates until after Disconnect is clicked.
Load	Click to open a previously saved file on the PC.
About	Software revision indicator.
Exit	Click to exit the LXE QuickConfig application.

## Connect Button



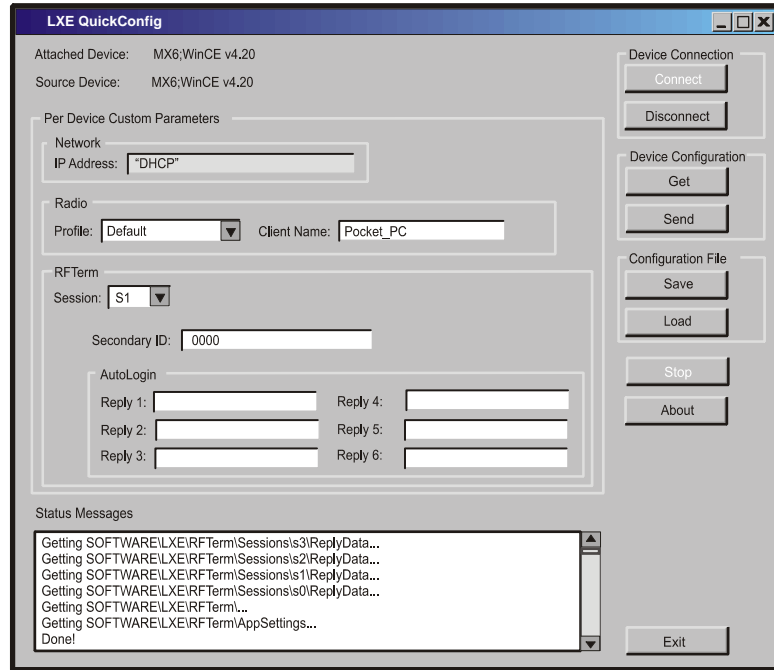
**Figure 2 Display – Connect Result**

## Options

Button	Description
Disconnect	Click to disconnect the PC from the mobile device. After disconnection, this button inactivates until after Connect is clicked.
Get	Click to collect parameters from the mobile device connected via ActiveSync.
Send	Click to send collected/edited parameters to the mobile device connected via ActiveSync.
Save	Click to save collected/edited parameters to a file on the PC.
Load	Click to open a previously saved file on the PC.
About	Software revision indicator.
Exit	Click to exit the LXE QuickConfig application.



**Get Button**

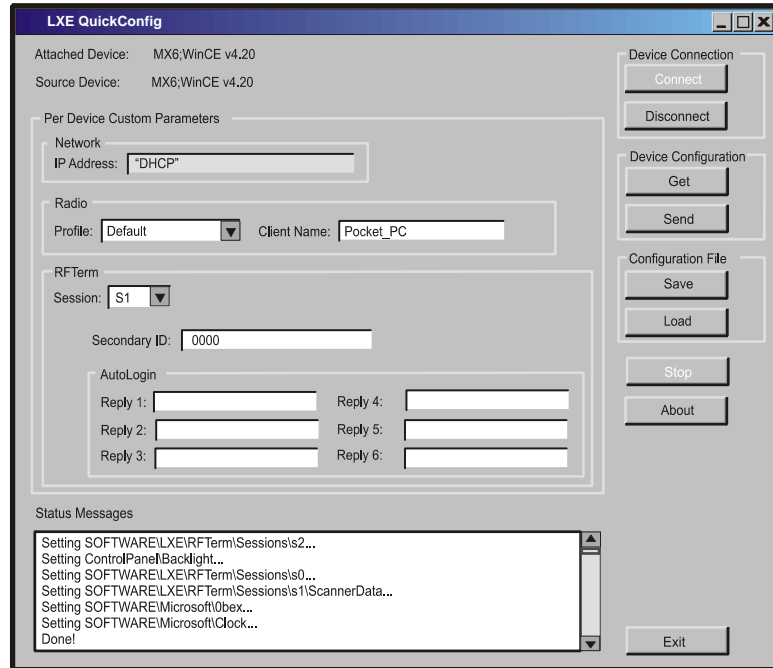


**Figure 3 Display – Get Result**

**Options**

Button	Description
Disconnect	Click to disconnect the PC from the mobile device. After disconnection, this button inactivates until after Connect is clicked.
Get	Click to collect parameters from the mobile device connected via ActiveSync.
Send	Click to send collected/edited parameters to the mobile device connected via ActiveSync.
Save	Click to save collected/edited parameters to a file on the PC.
Load	Click to open a previously saved file on the PC.
Stop	Click to stop Get or Send activity.
About	Software revision indicator.
Exit	Click to exit the LXE QuickConfig application.

## Send Button

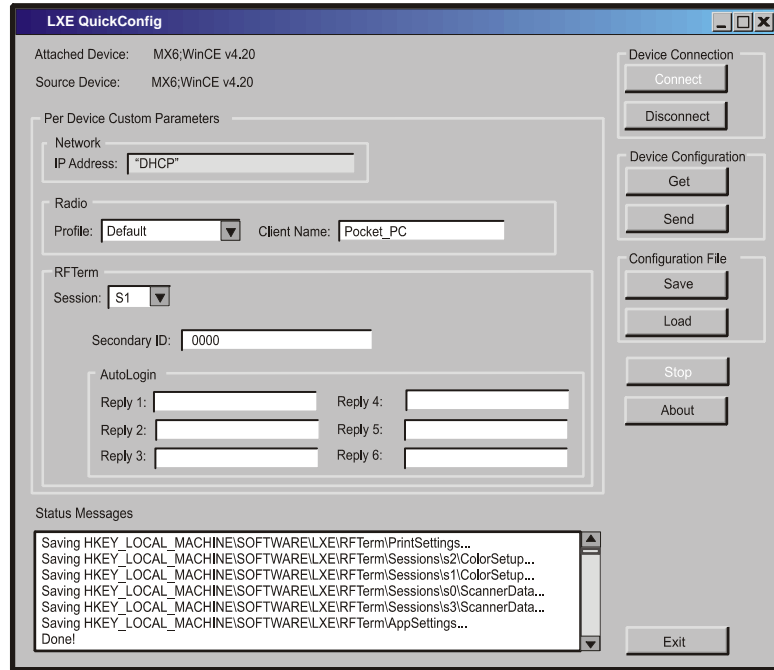


**Figure 4 Display – Send Result**

## Options

Button	Description
Connect	Click to connect the PC to the mobile device. After connection, this button inactivates until after Disconnect is clicked.
Disconnect	Click to disconnect the PC from the mobile device. After disconnection, this button inactivates until after Connect is clicked.
Get	Click to collect parameters from the mobile device connected via ActiveSync.
Send	Click to send collected/edited parameters to the mobile device connected via ActiveSync.
Save	Click to save collected/edited parameters to a file on the PC.
Load	Click to open a previously saved file on the PC.
Stop	Click to stop Get or Send activity.
About	Software revision indicator.
Exit	Click to exit the LXE QuickConfig application.

**Save Button**

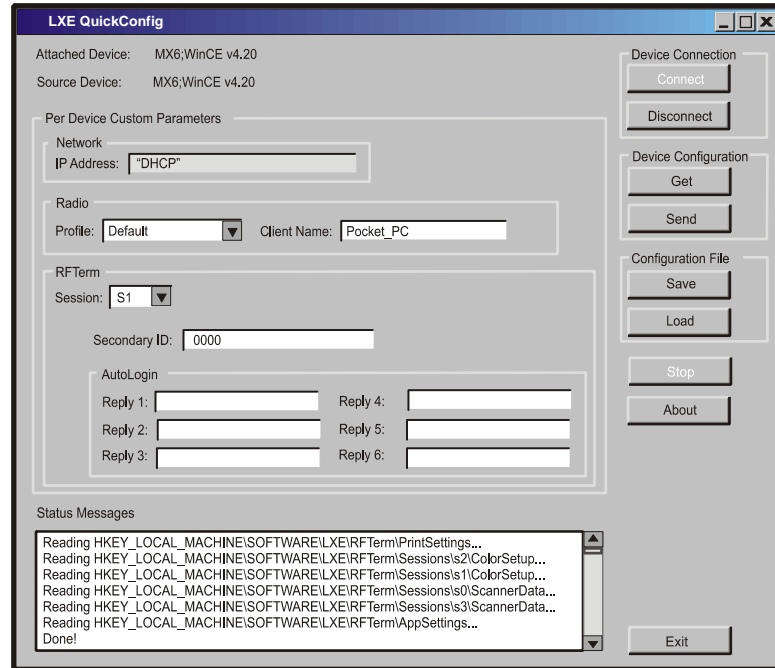


**Figure 5 Display – Save Result**

**Options**

Button	Description
Disconnect	Click to disconnect the PC from the mobile device. After disconnection, this button inactivates until after Connect is clicked.
Get	Click to collect parameters from the mobile device connected via ActiveSync.
Send	Click to send collected/edited parameters to the mobile device connected via ActiveSync.
Save	Click to save collected/edited parameters to a file on the PC.
Load	Click to open a previously saved file on the PC.
About	Software revision indicator.
Exit	Click to exit the LXE QuickConfig application.

## Load Button



**Figure 6 Display – Load Result**

## Options

Button	Description
Disconnect	Click to disconnect the PC from the mobile device. After disconnection, this button inactivates until after Connect is clicked.
Get	Click to collect parameters from the mobile device connected via ActiveSync.
Send	Click to send collected/edited parameters to the mobile device connected via ActiveSync.
Save	Click to save collected/edited parameters to a file on the PC.
Load	Click to open a previously saved file on the PC.
About	Software revision indicator.
Exit	Click to exit the LXE QuickConfig application.

## Chapter 2 ActiveSync / Get Connected

### Introduction

**Requirement:** ActiveSync version 3.7 (or higher) must be on the host (desktop/laptop, PC) computer.

**Note:** *ActiveSync is installed on the mobile devices by LXE prior to shipping. These are “general” instructions. Refer to the specific device’s Reference Guide for complete ActiveSync information/instruction.*

A Guest partnership between a PC and the LXE mobile device must be established using serial RS-232 or USB connection between the PC and the mobile device.

**Note:** *MX6 -- The user should select “Guest” partnership when using this device.*

**Note:** *MX3X / MX3-RFID, MX5, VX6 or VX7 -- The user must select “No” to Synchronizing Data when using these devices .*

For more information about using ActiveSync on the PC, open ActiveSync, then open ActiveSync Help .

### Equipment-Specific ActiveSync Parameters

These parameters are not saved as part of the Configuration Parameter Listing.

*LXE recommends that Suspend Mode be cancelled or stopped on the mobile device for the duration of the ActiveSync processes.*

ActiveSync instructions and notes are in later sections titled “Serial Connection” and “USB Connection”.

Full ActiveSync instruction and notes are contained in the equipment-specific reference guides.

Equipment	Menu Path	Serial Option	USB Option
MX3X	Start   Settings   Control Panel   PC Connection	Serial 1 @ 57600	USB “Client”
MX3-RFID	Start   Settings   Control Panel   PC Connection	Not Applicable	USB “Client”
MX5 CE .NET	Start   Settings   Control Panel   PC Connection	COM 1 @ 115200	USB Default
MX6	Start   ActiveSync   Tools   Options	57600 Default	USB Connection
VX6 / VX7	Start   Settings   Control Panel   PC Connection <i>Note: VX6 and VX7 do not have a Suspend function. Screen Blanking is the only power management available on the VX6 and VX7.</i>	COM1 @ 57600 COM1 @ 115200 COM3 @ 57600 COM3 @ 115200	USB Client (default)

## Equipment-Specific ActiveSync Cables

Full descriptions and part numbers, instructions for use and notes when using ActiveSync cables and device-specific cradles are contained in the equipment reference guides on the LXE Manuals CD.

### MX3X

USB Client to PC/Laptop	USB-Client cable	MX3XA069CBLD9USBCLNT
Serial Client to PC/Laptop	RS-232 9 Pin to 9 Pin	9000A054CBL6D9D9

### MX3-RFID

USB Client to PC/Laptop	USB-Client cable	MX3XA069CBLD9USBCLNT
-------------------------	------------------	----------------------

### MX5 CE .NET

USB Client to PC/Laptop	D26 to USB	MX5A052CBLD26USB
Serial Client to PC/Laptop	D26 to DA9F	MX5A051CBLD26DA9F

### MX6

MX6 - Charge/Comm Interface Cable, USB	MX6A055CBLD17USB
MX6 - Charge/Comm Interface Cable, RS-232	MX6A054CBLD17RS232
Cradle - USB Cradle to PC Interface Cable	MX6A057CBL6USB
Cradle - RS-232 Cradle to PC Interface Cable	MX6A059CBL6RS232

### VX6 and VX7

USB Client to PC/Laptop	Uses a standard USB cable with a type A plug on one end, and a type B plug on the other.	9000A075CBLUSHHCETH
Serial Client to PC/Laptop	RS-232 9 Pin to 9 Pin	9000A054CBL6D9D9

---

## ActiveSync / Initial Install

Initial installation / relationship must be established using serial RS232 or USB cable connection between the LXE mobile device and the host PC. Once a relationship has been established, select ActiveSync Help for help.

---

### Install ActiveSync on Desktop/Laptop

Go to the Microsoft Windows website ActiveSync Download | Install file location:

[www.microsoft.com/downloads](http://www.microsoft.com/downloads)

and type **ActiveSync** in the Keywords text box. This process should locate the latest version of ActiveSync.

Install ActiveSync 3.7 (or later) on the PC before using ActiveSync to connect the PC to the mobile device.

Follow the instructions in the ActiveSync Wizard.

Check that **ActiveSync | Tools | Options** has the correct connection selected. Refer to “Serial Connection” or “USB Connection”.

When installation of ActiveSync is complete on the PC, the ActiveSync Setup Wizard on the PC begins and it begins searching for a connected device.

Because ActiveSync is already installed on the LXE mobile device, the first synchronization process begins automatically when you finish setting up the PC in the ActiveSync wizard and cable the mobile device to the PC.

---

## Serial Connection

---

### MX3X

*Note: Serial connection is not applicable to the MX3-RFID.*

Select **Start | Settings | Control Panel | PC Connection** on the MX3X. Tap the Change button. From the popup list, choose

Serial 1 @ 57600 or  
Serial 1 @ 115200

*Note: The default is 'USB Client'.*

This will set the MX3X to use COM 1. If the device has a dual-serial port endcap, the Serial 3 @ 57600 can also be selected. Tap OK and ensure the check box for "Allow connection with desktop computer when device is attached" is checked.

Tap OK to return to the Control Panel.

Select Scanner and ensure the integrated scanner is set to a port that is NOT the same as the ActiveSync port.

## MX5 CE .NET

Tap the  | **Settings** | **Control Panel** | **PC Connection** on the MX5. Tap the Change Connection button. From the popup list, choose

COM 1 @ 115200

*Note: The default is 115200 baud.*

This will set the MX5 to use COM 1. Tap OK and ensure the check box for "Enable direct connections to the desktop computer" is checked.

Select **Start** | **Settings** | **Control Panel** | **Scanner** and ensure the integrated laser scanner is set to a port that is NOT the same as the "Get Connected" port (COM 1).

Tap OK to return to the Control Panel.

---

## MX6

Select **Start** | **ActiveSync** | **Tools** | **Options**. At the PC tab, tap the Options button. Enable the "When cradled" checkbox. From the dropdown list, choose

57600 Default

*Note: The default is 57600 baud.*

This will set up the MX6 for serial connection. Tap OK.

---

## VX6 and VX7

*Note: By default COM1 is configured for scanner use. This setting must be disabled in order to use COM1 for ActiveSync.*

Select **Start** | **Settings** | **Control Panel** | **PC Connection**. Click the Change button. From the popup list, choose the appropriate COM port and baud rate:

- COM1 @ 57600 or COM1 @ 115200
- COM3 @ 57600 or COM3 @ 115200

This will set the mobile device to use the designated COM port. Click OK and ensure the check box for "Allow connection with desktop computer when device is attached" is checked.

Click OK to return to the Control Panel.

*Note: By default COM3 (labeled "COM2/3") is configured to use ActiveSync (Pin 9 = RI). Please refer to "Serial Port Pin 9" in Chapter 4, "System Configuration" in the equipment's reference guide for details on configuring Pin 9 of the serial ports.*



---

## USB Connection

---

### MX3X / MX3-RFID

Select **Start | Settings | Control Panel | PC Connection**. Tap the Change button. From the popup list, choose

USB “Client”

This will set the MX3X to use the USB port. Tap OK and ensure the check box for "Allow connection with desktop computer when device is attached" is checked.

Tap OK to return to the Control Panel.

**Important** - Do not put the mobile device into suspend while connected via USB. The device will be unable to connect to the host PC when it resumes.

---

### MX5 CE .NET

Tap the  **Settings | Control Panel | PC Connection** on the MX5. Tap the Change Connection button. From the popup list, choose

USB Default

This will set the MX5 to use the USB port. Tap OK and ensure the check box for "Enable direct connections to the desktop computer" is checked.

Tap OK to return to the Control Panel.

---

### MX6

Select **Start | ActiveSync | Tools | Options**. At the PC tab, tap the Options button. Enable the “When cradled” checkbox. From the dropdown list, choose

USB Connection

This will set up the MX6 for USB cable connection. Tap OK

---

### VX6 and VX7

Select **Start | Settings | Control Panel | PC Connection**. Click the Change button. From the popup list, choose

USB Client (default)

This will set the mobile device to use the USB port. Click OK and ensure the check box for “Allow connection with desktop computer when device is attached” is checked.

Click OK to return to the Control Panel.

## ActiveSync Connect

*ActiveSync connects through powered cradles only.*

---

### MX3X / MX3-RFID

*Note:* Run "Connect" when the "Get Connected" wizard on the host PC is checking COM ports to establish a connection for the first time.

Connect the correct\*\* cable to the PC (the host) and the mobile device (the client). Select "Connect" from the Start Menu on the client (**Start | Programs | Communications | Connect**).

*Note:* USB will start automatically when the USB cable is connected, not requiring you to select "Connect" from the start menu.


\*\* **Cables for initial MX3X ActiveSync Configuration:**


USB Client to PC/Laptop	USB-Client cable	MX3XA069CBLD9USBCLNT
Serial Client to PC/Laptop	RS-232 9 Pin to 9 Pin	9000A054CBL6D9D9

*Note:* The MX3-RFID uses a passive, non-powered cradle. The MX3-RFID can be "in" the cradle while connecting to ActiveSync with the USB cable and the USB Client port on the MX3-RFID endcap.

---

### MX5 CE .NET

Connect the correct\*\* cable to the PC (the host) and the MX5 (the client). Tap the  | **Programs | Communication | Get Connected** on the MX5.

The MX5 connection is made using  | **Run**. Tap the Browse button and browse to the Windows folder. Select repllog.exe and tap the OK button. The Run text box reappears with \windows\repllog in the text box.

Before pressing Enter, type a backslash ( / ) and "remote" in the Run text box. For example: \windows\repllog / remote

\*\* **Cables for initial MX5 CE .NET ActiveSync Configuration:**

USB Client to PC/Laptop	D26 to USB	MX5A052CBLD26USB
Serial Client to PC/Laptop	D26 to DA9F	MX5A051CBLD26DA9F

When the desktop/laptop computer and the MX5 successfully connect, the initial ActiveSync process is complete.

---

## MX6

*Note:* Run "Connect" when the "Get Connected" wizard on the host PC is checking COM ports to establish a connection for the first time.

Connect the correct\*\* cable to the PC (the host) and the MX6 (the client). Select "ActiveSync" from the Start Menu on the MX6.

*Note:* USB will start automatically when the USB cable is connected, not requiring you to select "Connect" from the start menu.

\*\* Cables for initial MX6 ActiveSync Configuration:

MX6 - Charge/Comm Interface Cable, USB	MX6A055CBLD17USB
MX6 - Charge/Comm Interface Cable, RS-232	MX6A054CBLD17RS232
Cradle - USB Cradle to PC Interface Cable	MX6A057CBL6USB
Cradle - RS-232 Cradle to PC Interface Cable	MX6A059CBL6RS232

---

## VX6 and VX7

*Note:* Run "Connect" when the "Get Connected" wizard on the host PC is checking COM ports to establish a connection for the first time.

Connect the correct\*\* cable to the PC (the host) and the VX6 (the client). Select "Connect" from the Start Menu on the VX6 (**Start | Programs | Communications | Connect**).

*Note:* USB will start automatically when the cable is connected, not requiring you to select "Connect" from the start menu.

\*\* Cables for initial ActiveSync Configuration:

USB Client to PC/Laptop	Uses the 9000A075CBLUSBHCETH USB cable with a type A plug on one end, and a type B plug on the other.
Serial Client to PC/Laptop	RS-232 9 Pin to 9 Pin    9000A054CBL6D9D9



## Chapter 3 Parameters Collected by QuickConfig

### Introduction

Only major device-specific parameter contents are collected i.e. Cisco 350 ACU, Pegasus (MX6 only), Network, AppLock, Internet Settings, Owner, Power, Scanner Control and RFTerm.

Not all parameters can be edited by the system administrator.

Parameters are saved in CE .NET formatted registry files on the desktop/laptop.

---

### MX3X, MX3-RFID, MX5 CE .NET, VX6, VX7

---

#### Control Panel

*Aironet Client Utility*

*Administration (APLOCK)*<sup>1</sup>

*Display (not included on MX5 CE .NET)*

*/Appearance – Scheme only*

*Internet Settings*

*/General*

*/Connection*

*/Advanced*

*/Security*

*Network - CISCO1*

*Owner*

*Power*<sup>2</sup>

*Regional Settings*

*Scanner Control*

*System Properties*

*/Device Name*

---

#### MX3-RFID Only

*RFID Config Utility*

---

#### MX5 CE .NET Only

*Control Panel*

*Internet Options/Connection*

*Power*

*Scanner Control*

*/COM4*

---

<sup>1</sup> Does not save Administration password.

<sup>2</sup> MX3X only – Power/Turbo setting is not saved.

---

## VX6/7 Only

Network – SMSC1111

Note: Power control panel not present.

---

## MX6

### /Personal

Buttons

Owner Information

Today<sup>3</sup>

### /System

About

Administration

Backlight

Clock<sup>4</sup>

    /Time

    /Alarms

Power

    /Advanced

Regional Settings

Scanner

Tethered Scanner on COM1

### /Connections

802.11b or Pegasus Settings

    /Config

    /Advanced

Beam

Radio Manager

---

## RFTerm

File

    /Settings

File

    /Print Settings

    /Windows<sup>5</sup>

Session

    /Configure

---

<sup>3</sup> Does not save Use picture as background, Background picture path.

<sup>4</sup> Does not save Time, Date.

<sup>5</sup> Does not save the following settings: Margins, Print Range.